

Configure a VOCOM to WLAN wireless mode using an Access Point

- **Step 1:** Connect VOCOM unit/cables to the PC and a Vehicle (key off).

Product	Product History	Diagnose	Test	Calibrate	Program	Impact
---------	-----------------	----------	------	-----------	---------	--------

Selected Product

Connect	Settings...	Manual Selection...	Latest Selections...	OBD/LVD ▾
---------	-------------	---------------------	----------------------	-----------

No Connection to Product

To identify a product, try one of the following options:

- Plug in the USB cable. Click Connect if the readout does not start automatically.
- Click Settings to select a wireless communication unit or configure communication unit settings.
- Search manually for a product or specific model in Manual Selection.
- Select a previously selected product in Latest Selections.

Work Session

Communication Unit:
VOCOM/88890020/88840133

On the Product page you can see the VOCOM is first connected with the USB cable.

Connectivity

Status	Description
	VOCOM/88890020/88840133 (USB) is connected to the computer.
	No product connected to: VOCOM/88890020/88840133.

Configure a VOCOM to WLAN wireless mode using an Access Point

- **Step 2:** Click the “Settings” button.

Product	Product History	Diagnose	Test	Calibrate	Program	Impact
----------------	-----------------	----------	------	-----------	---------	--------

Selected Product

Connect	Settings...	Manual Selection...	Latest Selections...	OBD/LVD ▾
---------	-------------	---------------------	----------------------	-----------

No Connection to Product

To identify a product, try one of the following options:

- Plug in the USB cable. Click Connect if the readout does not start automatically.
- Click Settings to select a wireless communication unit or configure communication unit settings.
- Search manually for a product or specific model in Manual Selection.
- Select a previously selected product in Latest Selections.

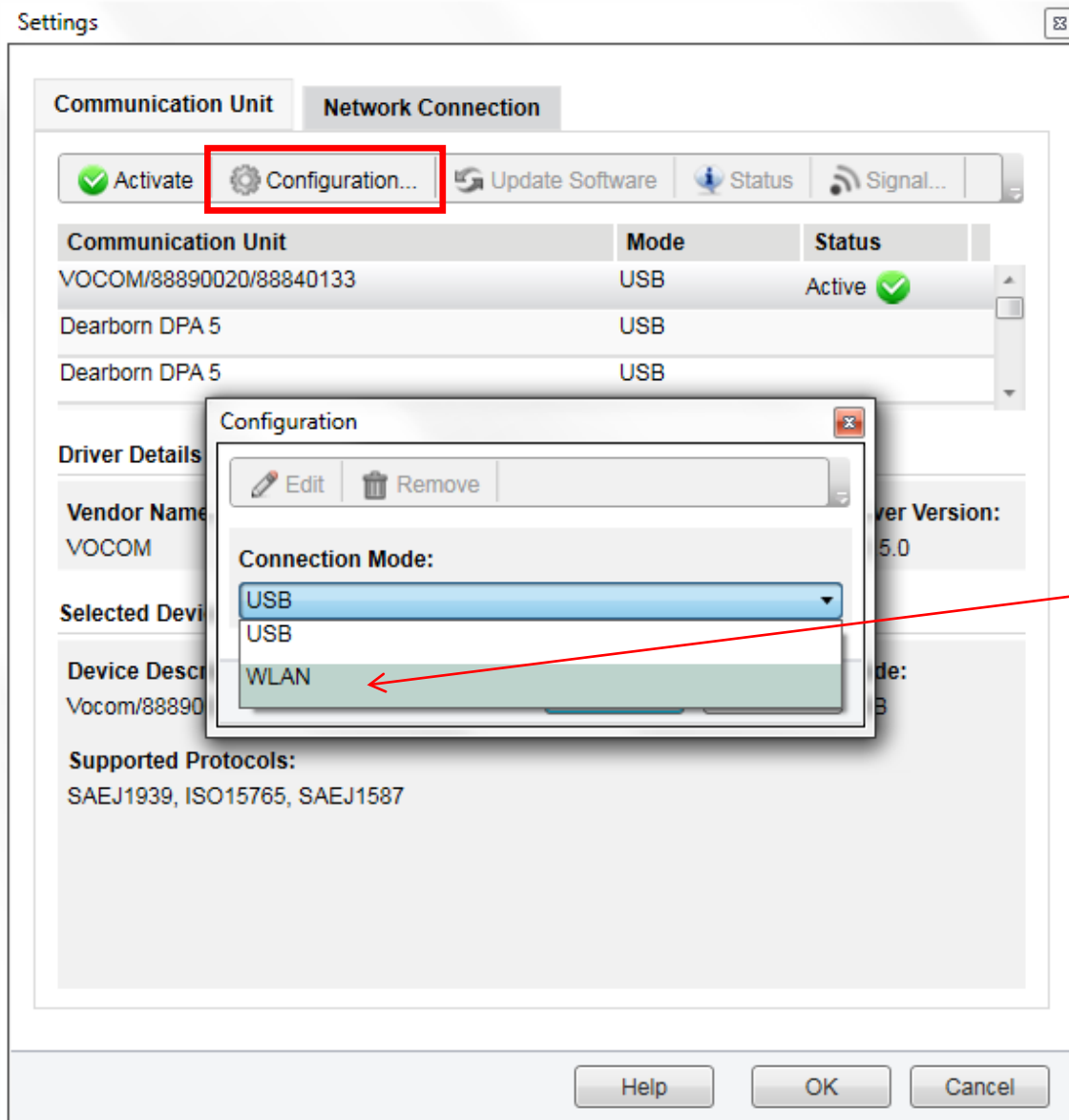
Work Session

Communication Unit:
VOCOM/88890020/88840133

Connectivity

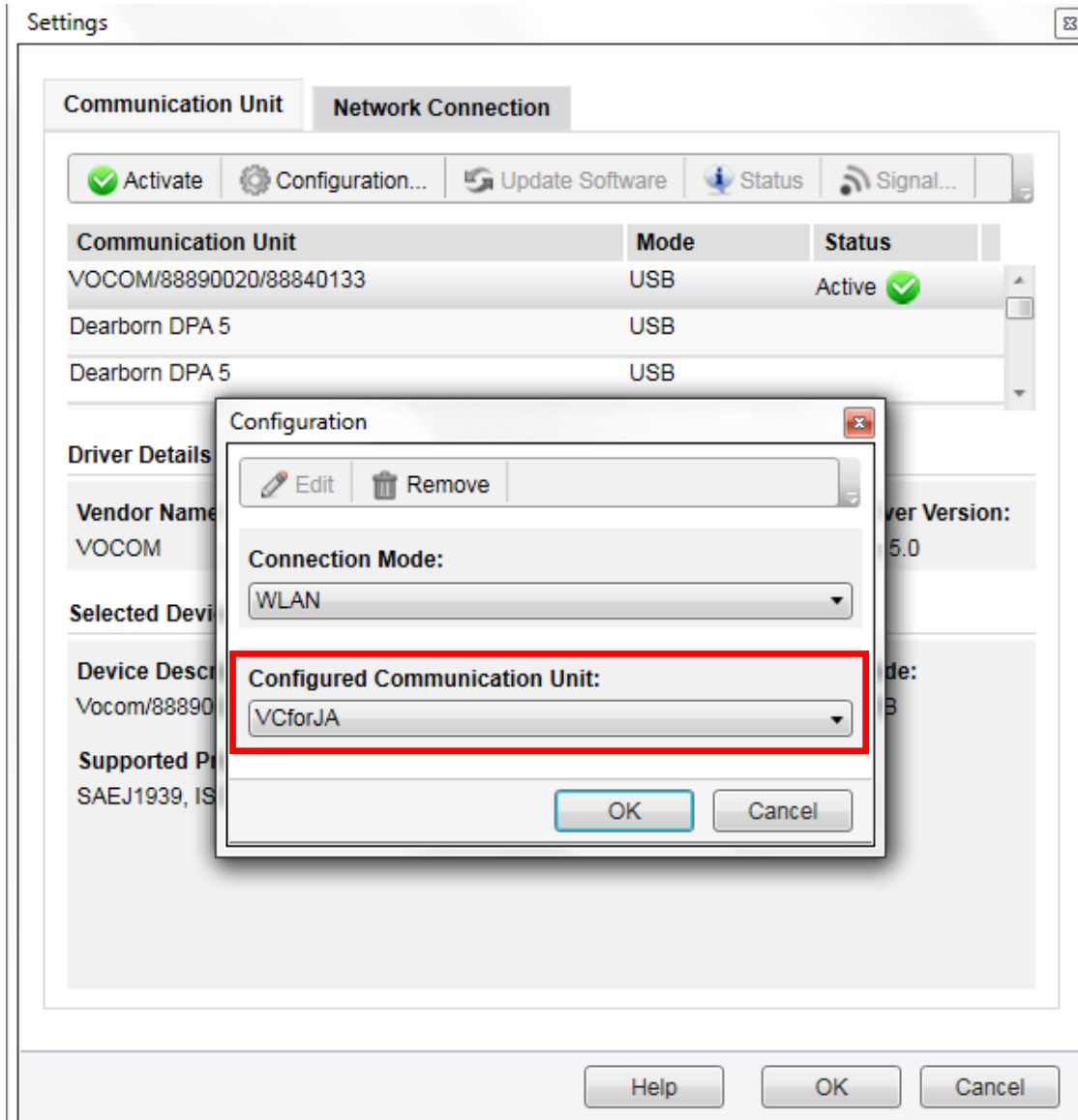
Status	Description
	VOCOM/88890020/88840133 (USB) is connected to the computer.
	No product connected to: VOCOM/88890020/88840133.

Configure a VOCOM to WLAN wireless mode using an Access Point



- **Step 3:** In the Settings menu click the “Configuration” button. The Configuration window will open. Select WLAN.

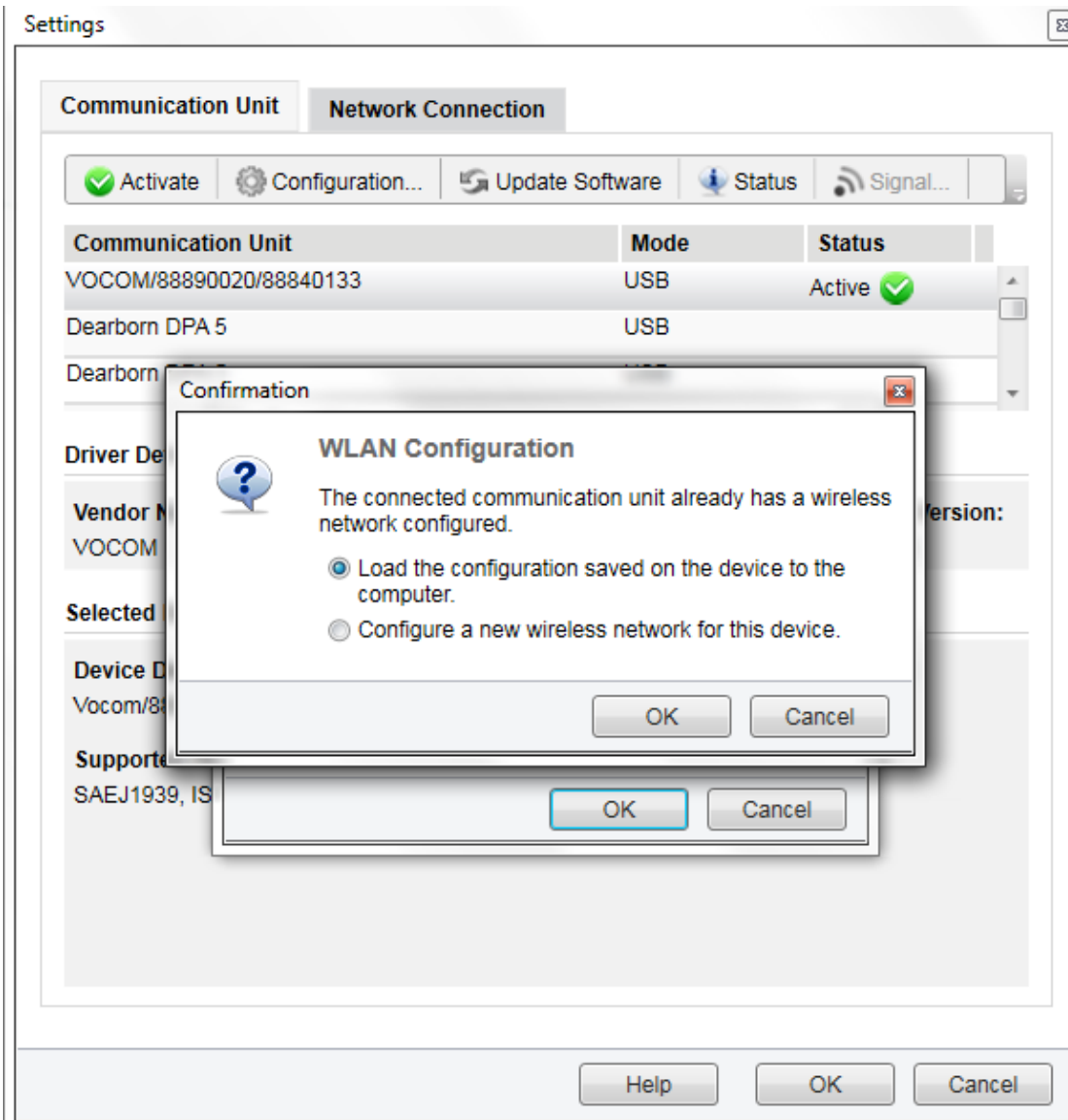
Configure a VOCOM to WLAN wireless mode using an Access Point



- **Step 4:** To identify the configured communication unit. Enter a name of your choice and select OK. (ex. *Garys_Adapter* or *VCforJA*)

NOTE: If you have more than one Vocom, each will require a separate configuration and name.

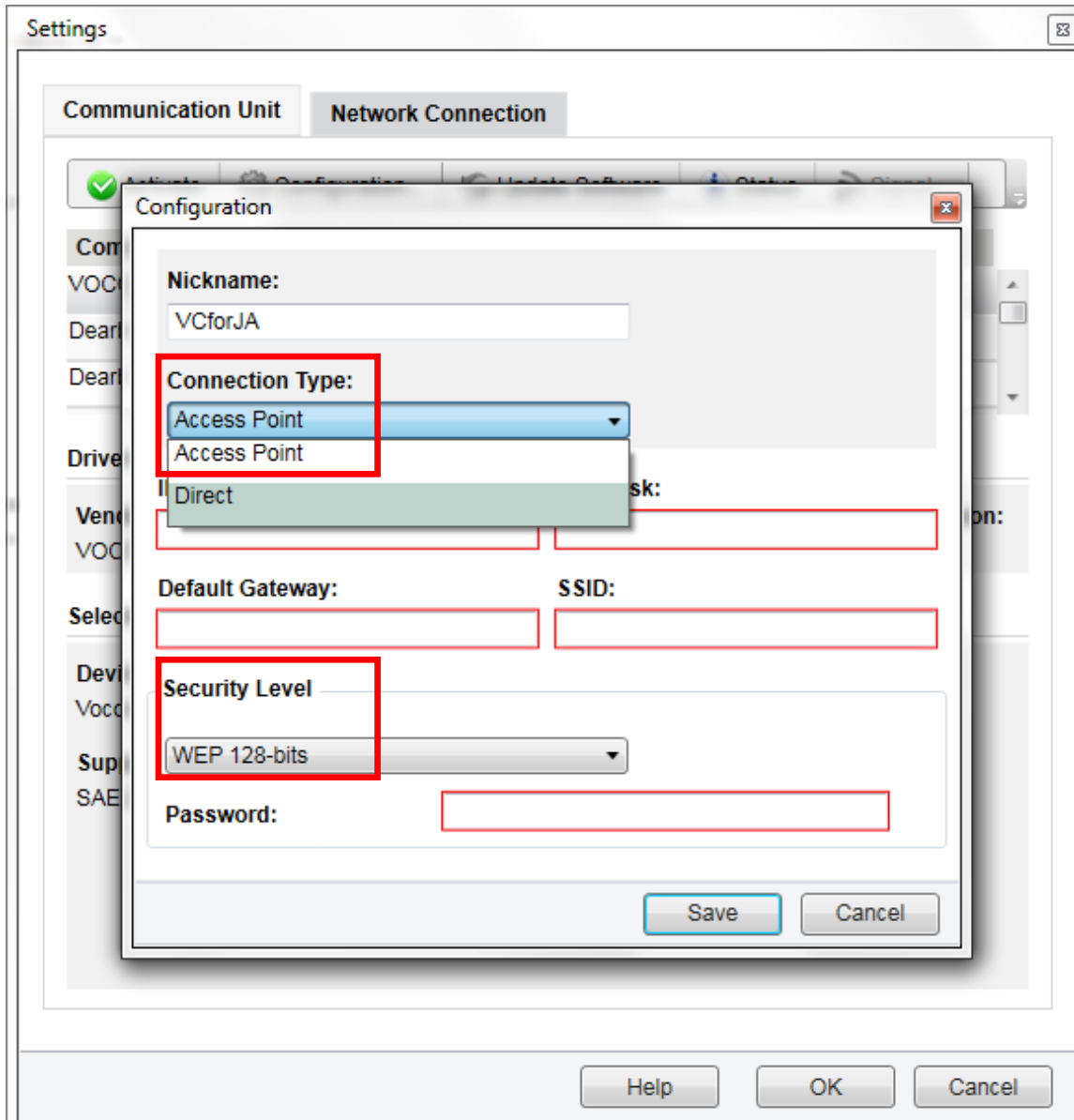
Configure a VOCOM to WLAN wireless mode using an Access Point



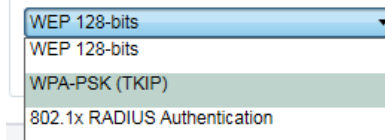
If the connected device was already configured, a confirmation message will pop up asking if you want to load the configuration or set up a new configuration.

- **Step 5:** Make a selection here for your configuration.

Configure a VOCOM to WLAN wireless mode using an Access Point



- **Step 6:** Under Connection Type choose “Access Point”.
To complete the configuration, the IT person will be required to enter the data.
This is the data required for the VOCOM to connect to the Wireless Router.
- **Step 7:** Click “Save” to complete configuration setup.



NOTE: In the drop down there are 3 different Security Levels to choose from.

Configure a VOCOM to WLAN wireless mode using an Access Point

The screenshot shows a 'Settings' window with a 'Network Connection' tab. A 'Configuration' dialog box is open, displaying the following fields:

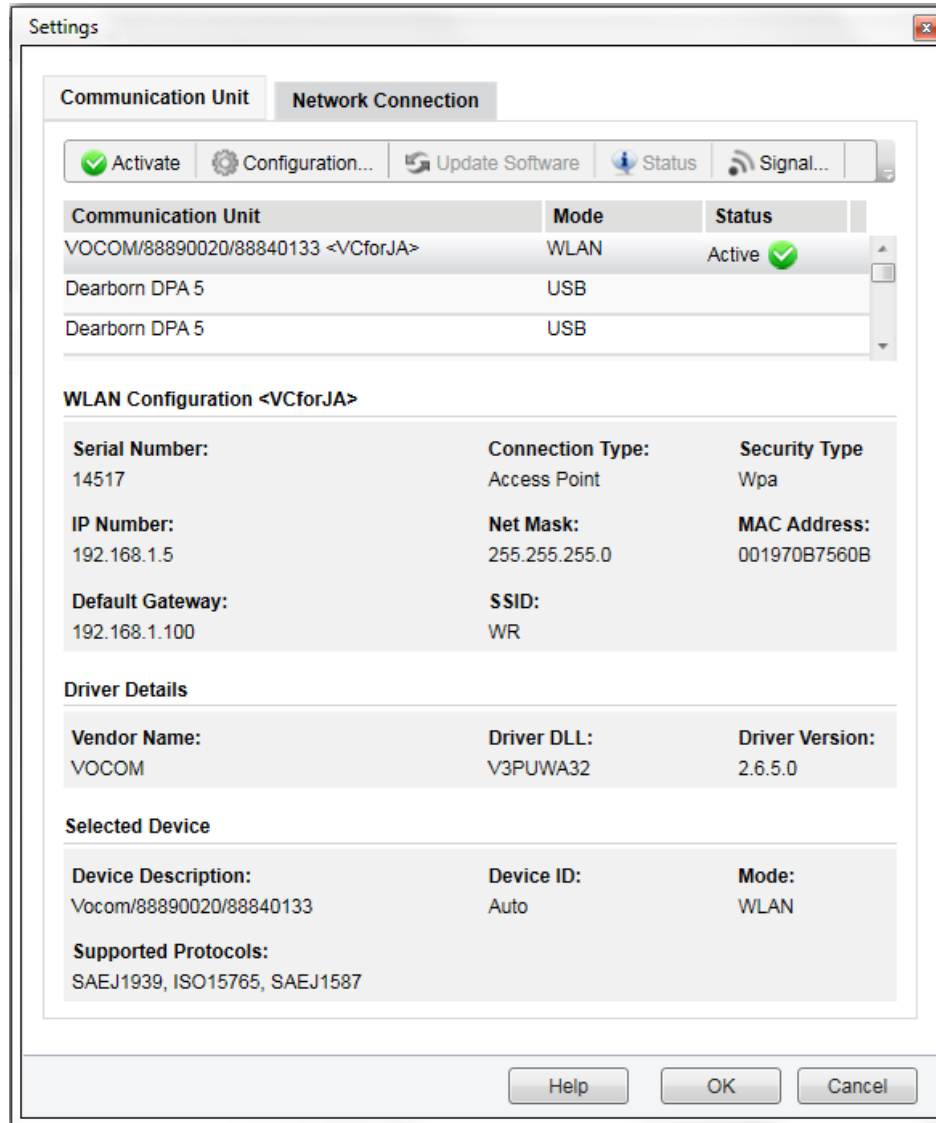
- Nickname:** VCforJA
- Connection Type:** Access Point
- IP Number:** 192.168.1.6
- Net Mask:** 255.255.255.0
- Default Gateway:** 192.168.1.100
- SSID:** WR
- Security Level:** WPA-PSK (TKIP)
- Password:** 88888888

Buttons for 'Save', 'Cancel', 'Help', 'OK', and 'Cancel' are visible at the bottom of the dialog box.

- **Example:** This is an example of a completed configuration for the wireless router that we used. Your configuration will need to be set according to your location's router.

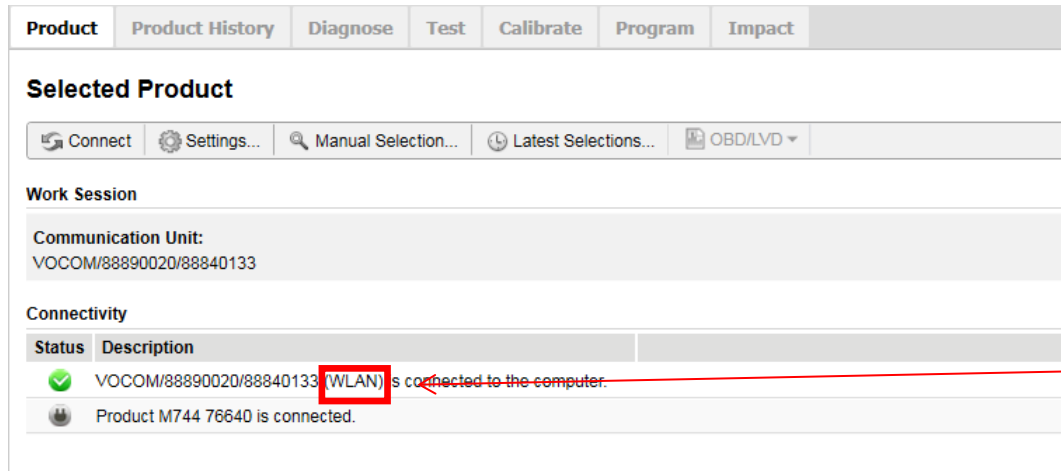
NOTE: The example used a different Security Level. Your configuration will vary depending on your network environment.

Configure a VOCOM to WLAN wireless mode using an Access Point



- **Step 8:** Select the newly configured VOCOM WLAN (mode) Communication Unit. Click the “Activate” button and then “OK” to close the “Settings” window.

Configure a VOCOM to WLAN wireless mode using an Access Point



The screenshot displays the Vocom software interface. At the top, there is a navigation bar with tabs: Product, Product History, Diagnose, Test, Calibrate, Program, and Impact. Below this, the 'Selected Product' section is visible, containing a toolbar with 'Connect', 'Settings...', 'Manual Selection...', 'Latest Selections...', and 'OBD/LVD'. Underneath, the 'Work Session' section shows the 'Communication Unit' as 'VOCOM/88890020/88840133'. The 'Connectivity' section features a table with two columns: 'Status' and 'Description'. The first row shows a green checkmark in the 'Status' column and 'VOCOM/88890020/88840133 (WLAN) is connected to the computer.' in the 'Description' column. The word '(WLAN)' is highlighted with a red box, and a red arrow points from the right towards it. The second row shows a grey icon in the 'Status' column and 'Product M744 76640 is connected.' in the 'Description' column.

Status	Description
✓	VOCOM/88890020/88840133 (WLAN) is connected to the computer.
👤	Product M744 76640 is connected.

- **Step 9:** Unplug The USB cable and the VOCOM will be in WLAN mode.

NOTE: On the Product page you can see the VOCOM is now connected with the (WLAN).

When the USB cable is plugged into the PC, the VOCOM will revert to USB mode.